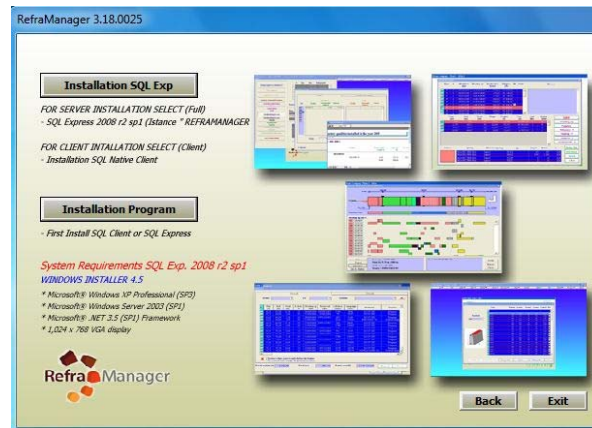


To install this program, you need to sign in to Windows as an administrator.
To request administrative rights for your computer, please contact your system administrator.

1) INSTALL ONLY PROGRAM REFRAMANAGER

2) Explore CD file

3) SELECT “Installation Program”

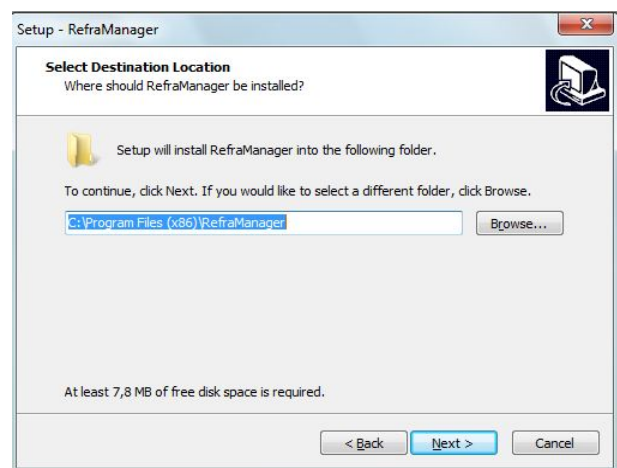
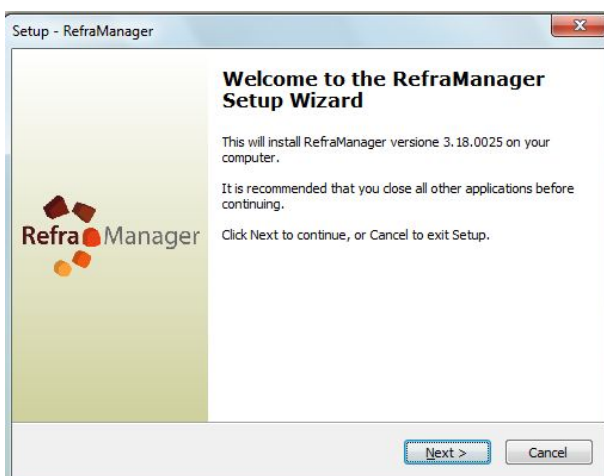


If you have UAC (User Account Control) active click yes to authorize installation

4) Select Language Setup (Next)

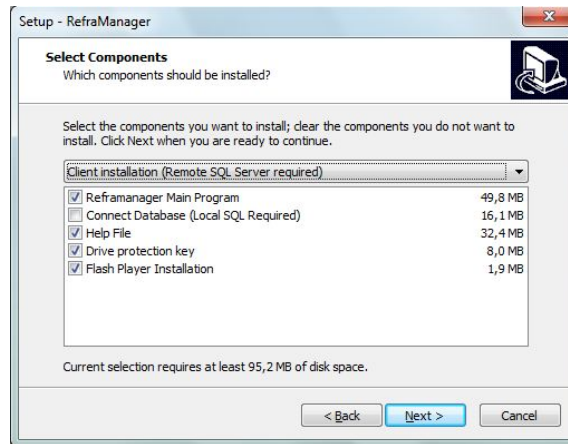
5) Welcome (Next)

6) Leave the installation selected folder from the Setup (Next)

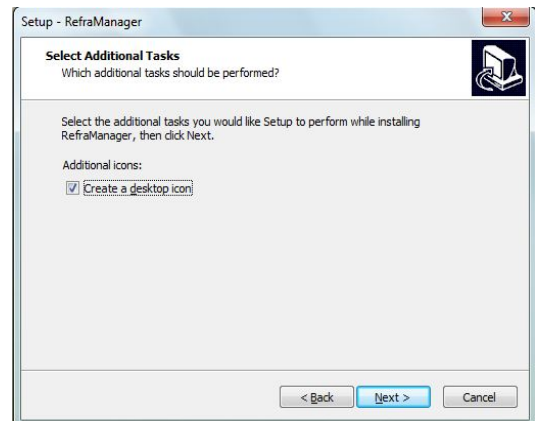
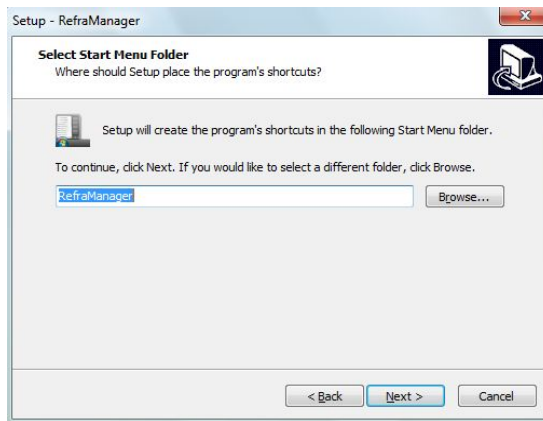


7) Select **"Client Installation (Remote SQL Server required)"**(Next)

If Flash Player is already installed on your computer "Flash Player Installation" not required

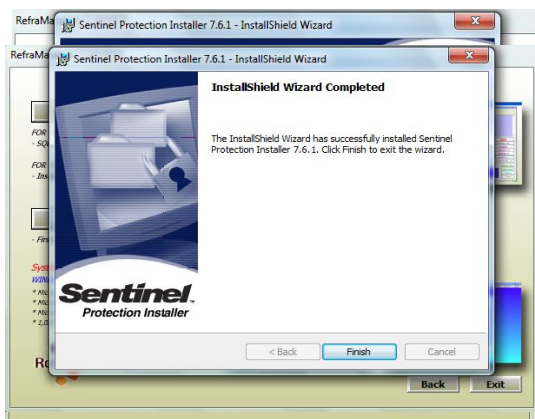
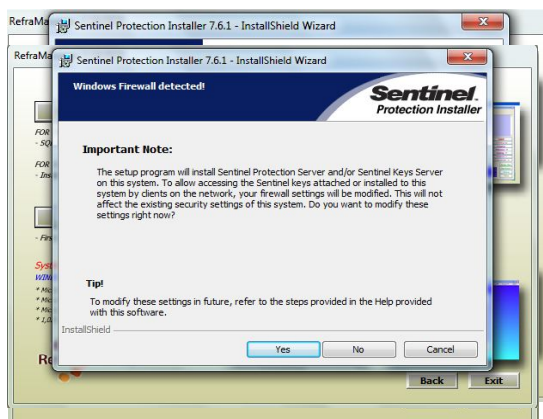


b) Select (Next)



c) select if you want to place the program icon on your desktop (Next)

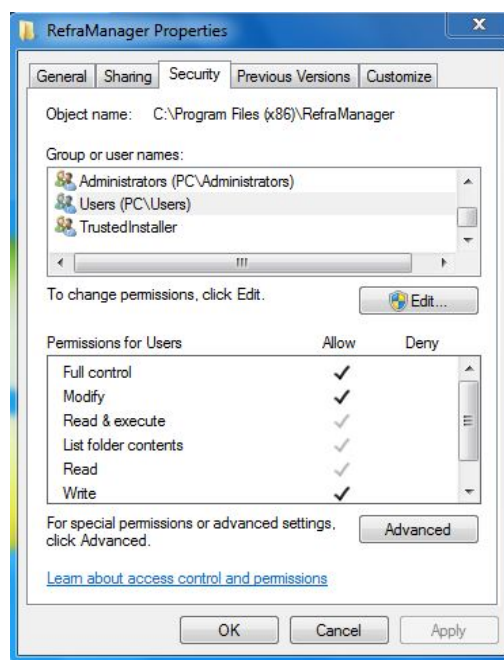
d) Wait for the end of the installation Program and Hardware Key





Restart the computer

8) Check Authorization folder “C:\Program Files (x86)\Reframanager”

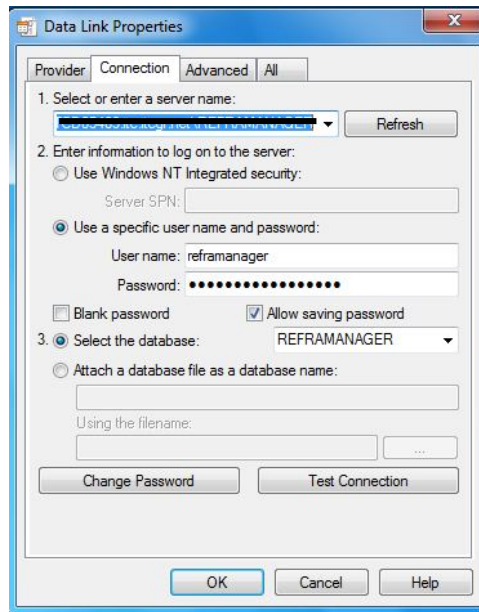


fullcontrol to domain users needed

9) check the connection to the SQLdatabase

10) Openfile %programfiles%\Reframanager\string.udl

11) TEST CONNECTIONS



If it does not work, change the file with notepad

[oledb]

; Everything after this line is an OLE DB initstring

```
Provider=SQLNCLI10.1;Password=XXXXXXXXXXXX;Persist Security Info=True;
User ID=reframanager;Initial Catalog=REFRAMANAGER;
Data Source=XXXXXXXXXXXX\REFRAMANAGER
```

Click on "Test connection" if the result is ok, the database connection is OK (go to first use)

For more information about parameters connection string and shared folder

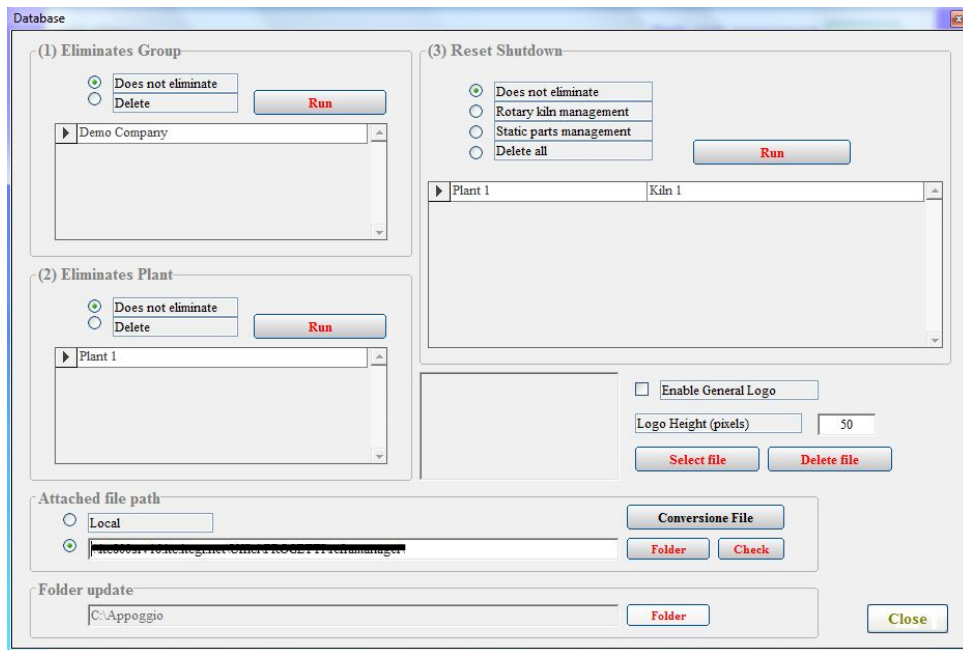
Contact

info@reframanager.com

WHEN FIRST USING PROGRAM

- 1) Insert the hardware key into an available USB port and wait the installation hardware
- 2) Start the program REFRAMANAGER
- 3) Insert New username and password (aut. Cod.....)(Contact support for code)
- 4) For proper operation of the program, immediately set the path for the folder to use attachments

Select Utilities – Data Management



The screenshot shows the 'Database' window with three main sections for data management:

- (1) Eliminates Group:** Includes radio buttons for 'Does not eliminate' (selected) and 'Delete', a 'Run' button, and a list box containing 'Demo Company'.
- (2) Eliminates Plant:** Includes radio buttons for 'Does not eliminate' (selected) and 'Delete', a 'Run' button, and a list box containing 'Plant 1'.
- (3) Reset Shutdown:** Includes radio buttons for 'Does not eliminate' (selected), 'Rotary kiln management', 'Static parts management', and 'Delete all', a 'Run' button, and a list box containing 'Plant 1' and 'Kiln 1'.

Additional settings at the bottom include:

- Attached file path:** Radio buttons for 'Local' and a selected path: '\\\\xxxxxxx\\reframanager\\'. Buttons for 'Conversione File', 'Folder', and 'Check' are present.
- Folder update:** A text box containing 'C:\\Appoggio' and a 'Folder' button.
- Other options:** 'Enable General Logo' checkbox, 'Logo Height (pixels)' set to 50, 'Select file', 'Delete file', and 'Close' buttons.

Test the folder – close the management – start using the program

\\\\xxxxxxxxxxx\\reframanager

It is advisable to use mapped disk

Start using the program - create a new kiln or use an existing kiln

For more information about parameters connection string and shared folder

Contact

info@reframanager.com