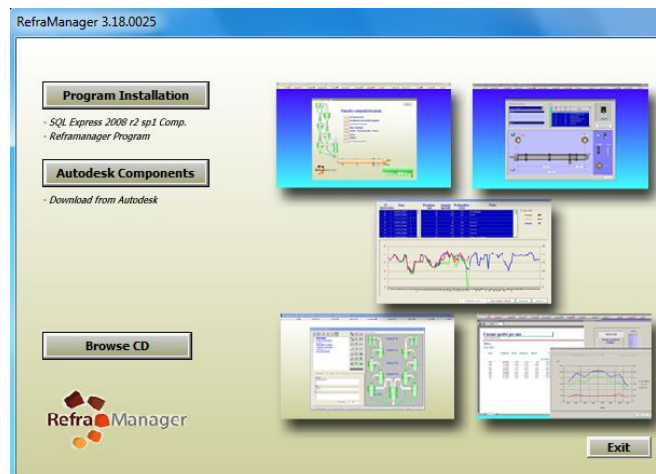


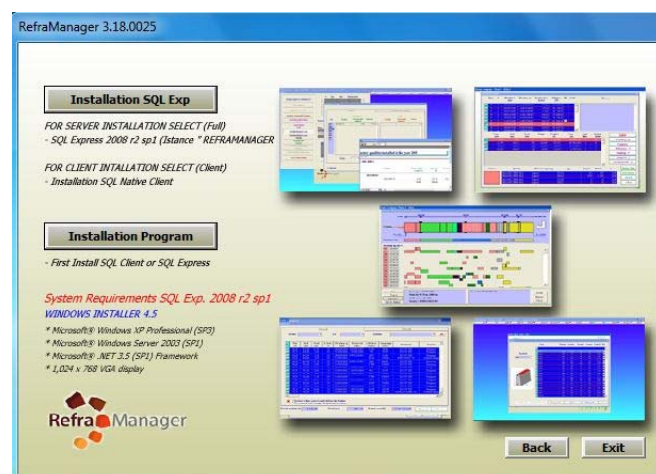
To install this program, you need to sign in to Windows as an Administrator.
To request Administrative rights for your computer, please contact your system Administrator.

INSTALLATION Server Sql EXPRESS2008 r2

- 1) Insert CD
- 2) If CD does not start automatically, run "autorun.exe" in the CD manually
- 3) When the CD starts if you see the movie intro (flash), you already have flash player on your PC (no need to reinstall click "skip intro and go to step 4")
 If you not see the intro click on "install flash player" when installation is complete, click on "skip intro"
- 4) **SELECT "Program Installation"**



- 5) **INSTALL COMPONENTS REQUIRED FOR SQL EXPRESS 2008 r2**
SELECT "Installation SQL Exp"

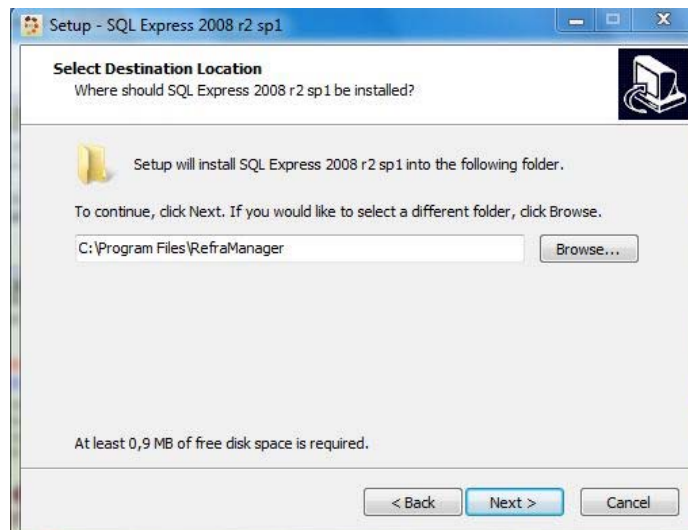


- a) If you have UAC active click yes to authorize installation
- b) Select Language Setup (Next)

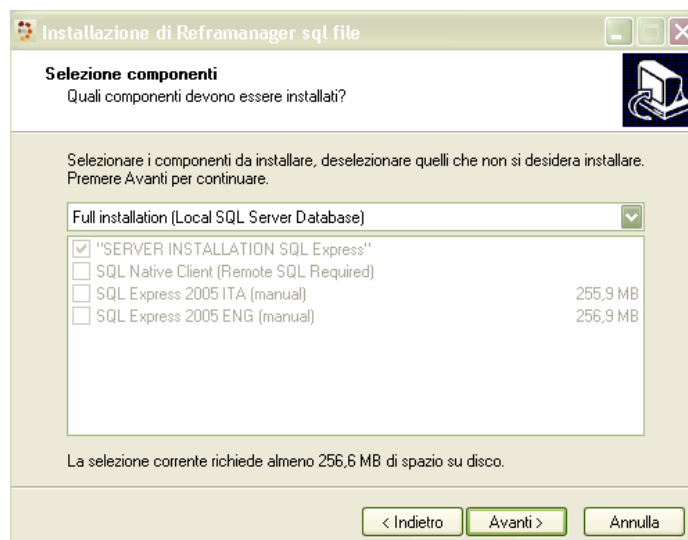
c) Welcome (Next)

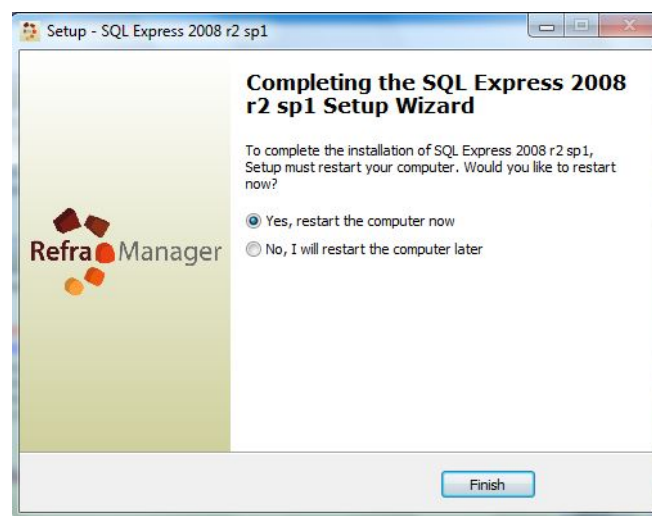
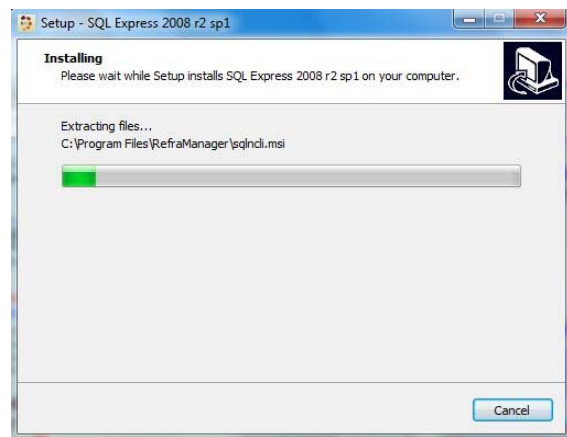
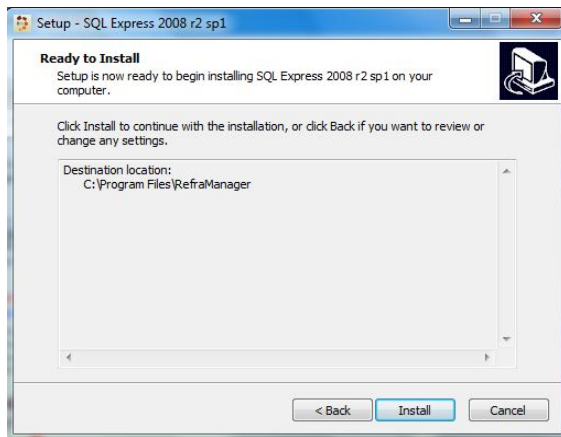


d) Leave the installation-selected folder from the Setup (%programfiles%) (Next)



e) Select **"Full Installation (Local SQL Server Database)"**(Next)





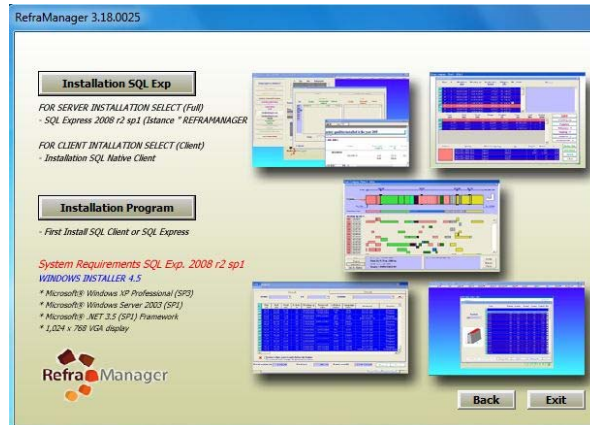
- f) Click Install
- g) Wait for the end of the installation and when prompted restart your PC
- h) Continue with the program installation after restart step 7

6) INSTALL PROGRAM REFRAMANAGER

To install this program, you need to sign in to Windows as an Administrator.
To request Administrative rights for your computer, please contact your system Administrator.

7) Open My Computer and reload the installation from CD(step 1 -4)

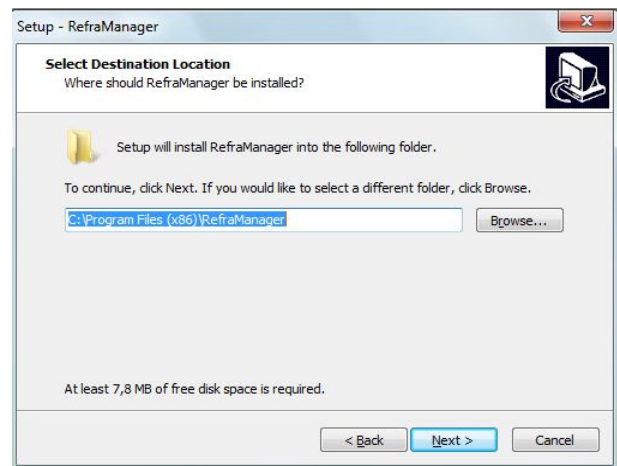
8) **SELECT "Installation Program"**



If you have UAC (User Account Control) activated, click yes to authorize installation

9) Select Language Setup (Next)

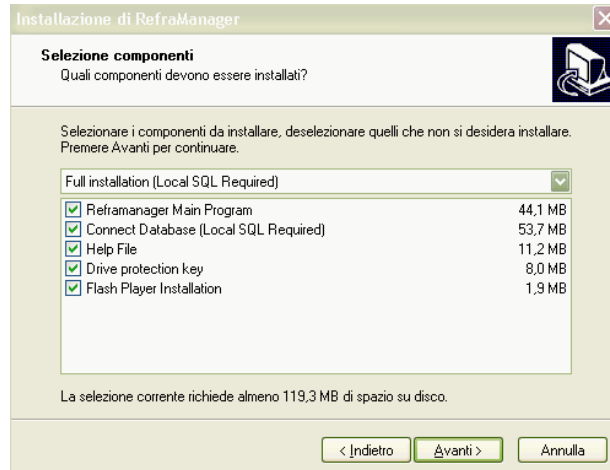
10) Welcome (Next)



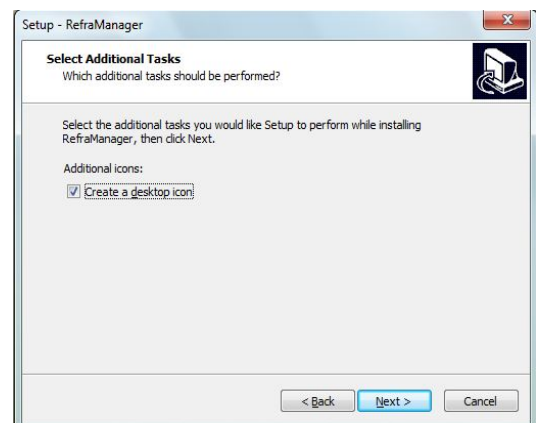
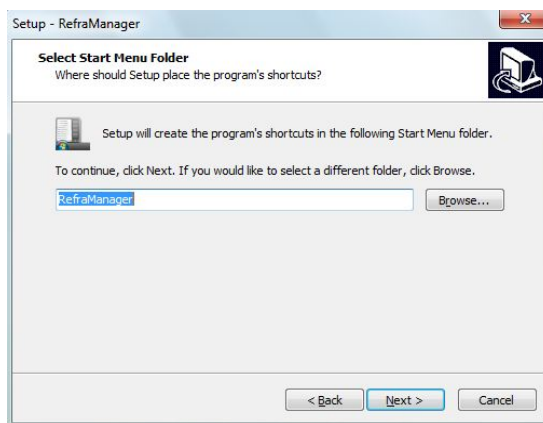
11) Leave the installation-selected folder from the Setup (%programfiles%) (Next)

12) Select **"Full Installation (Local SQL Server Database)"**(Next)

If Flash Player is already installed on your computer, "Flash Player Installation" is not required

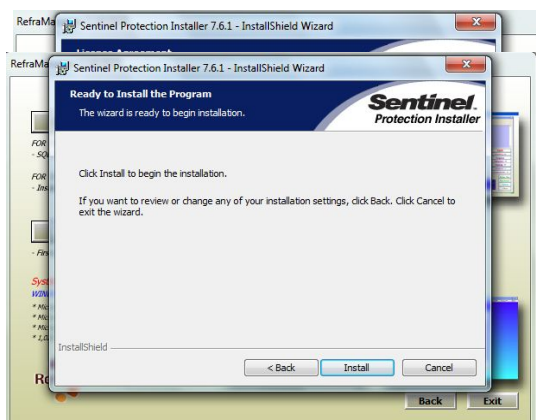
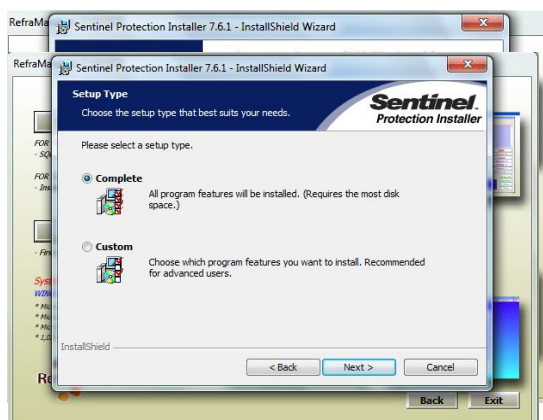


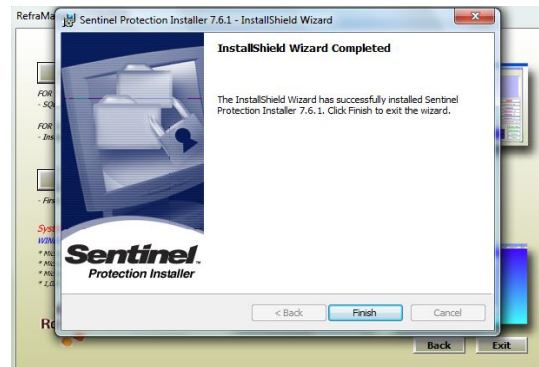
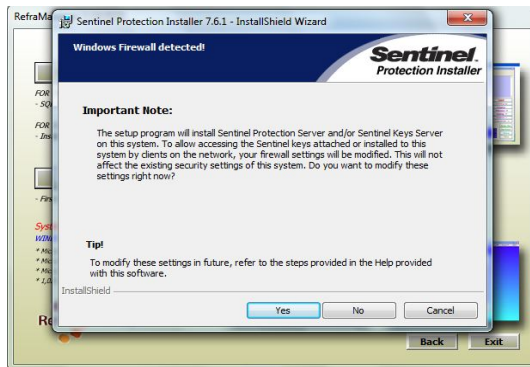
b) Select (Next)



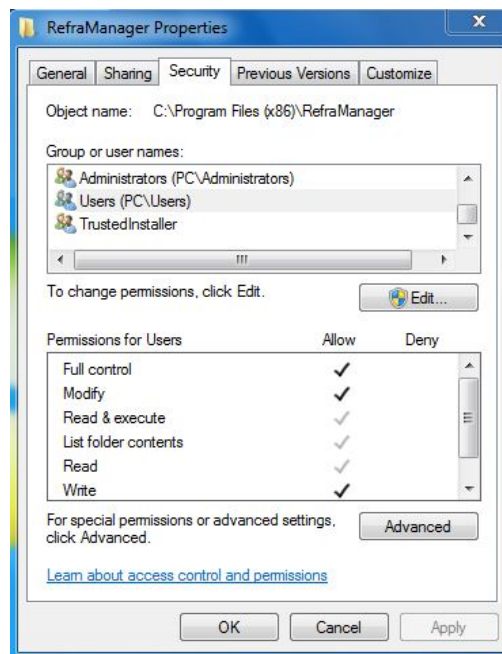
c) select if you want to place the program icon on your desktop (Next)

d) Wait for the end of the installation Program and Hardware Key



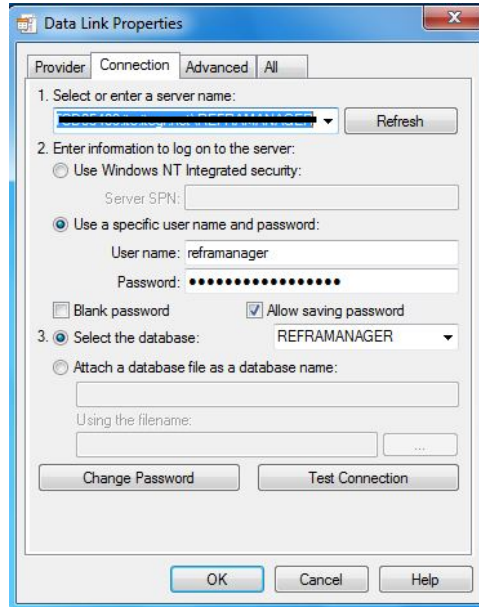


- 13) Restart the computer
- 14) Check Authorization folder "C:\Program Files (x86)\Reframanager"



fullcontrol to domain users needed

- 15) check the connection to the SQLdatabase
- 16) Openfile %programfiles%\Reframanager\string.udl
- 17) TEST CONNECTIONS



If it does not work, change the file with notepad

[oledb]

; Everything after this line is an OLE DB initstring

```
Provider=SQLNCLI10.1;Password=XXXXXXXXXXXX;Persist Security Info=True;
User ID=reframanager;Initial Catalog=REFRAMANAGER;
Data Source=XXXXXXXXXX\REFRAMANAGER
```

Click on "Test connection" if the result is ok, the database connection is OK (go to first use)

For more information about parameters of connection string and shared folder

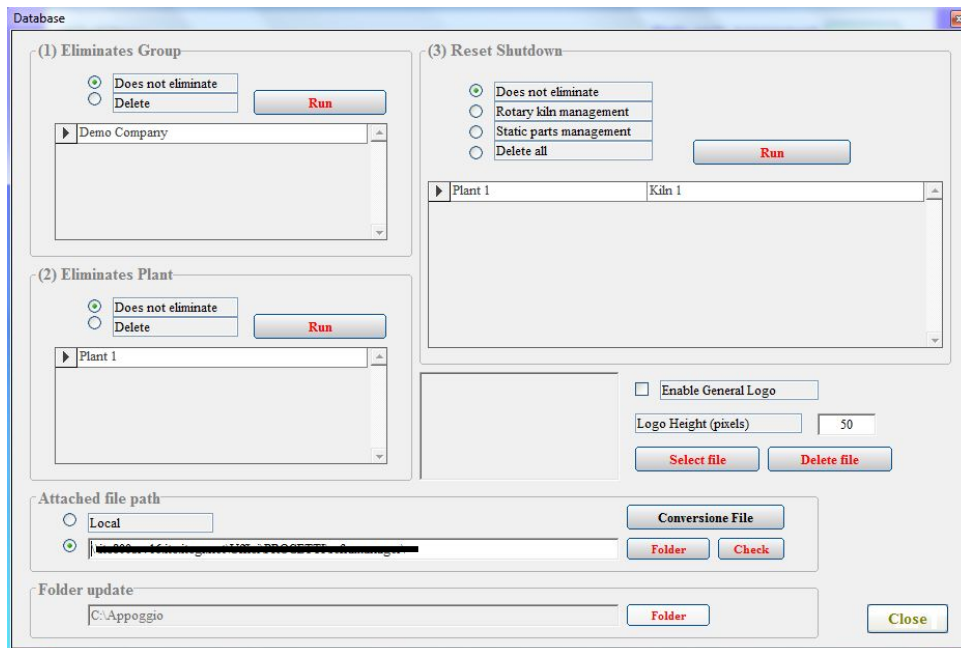
Contact

info@reframanager.com

FIRST USE OF PROGRAM

- 1) Insert the hardware key into an available USB port and wait for the installation hardware
- 2) Start the program REFRAMANAGER
- 3) Insert New username and password (aut. Cod.....)(Contact support for code)
- 4) For proper operation of the program, immediately set the path for the folder to use attachments

Select Utilities – Data Management



Test the folder – close the management – start using the program

\\xxxxxxxxxxx\reframanager

It is advisable to use mapped disk

Start using the program - create a new kiln or use an existing kiln

For more information about parameters connection string and shared folder

Contact

info@reframanager.com