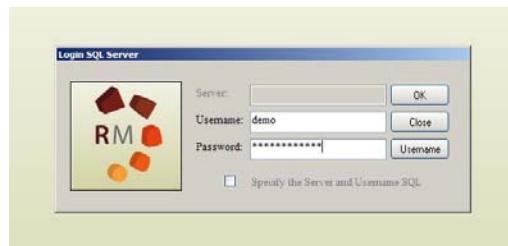


Update Folder Setting

- 1) Start the program REFRAMANAGER



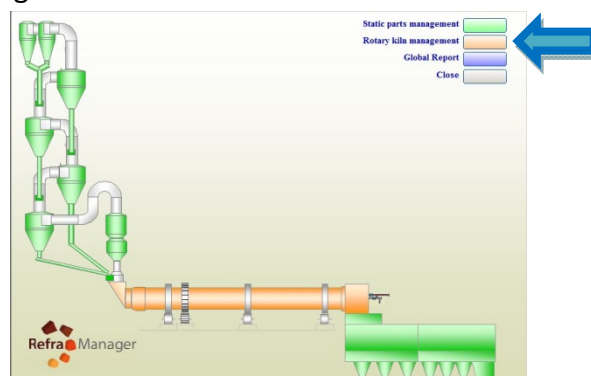
- 2) Insert username and password



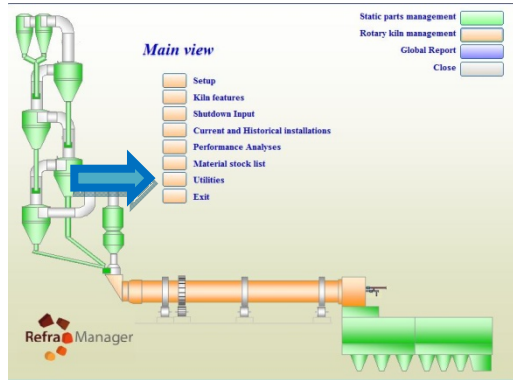
- 3) Select Language



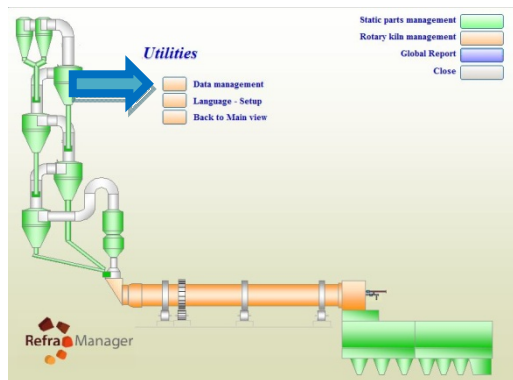
- 4) Select "Rotary kiln management"



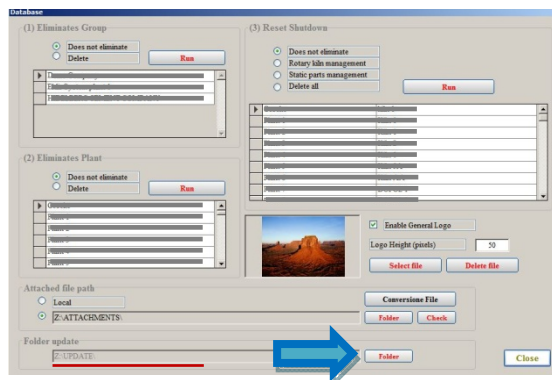
5) Select "Utilities"



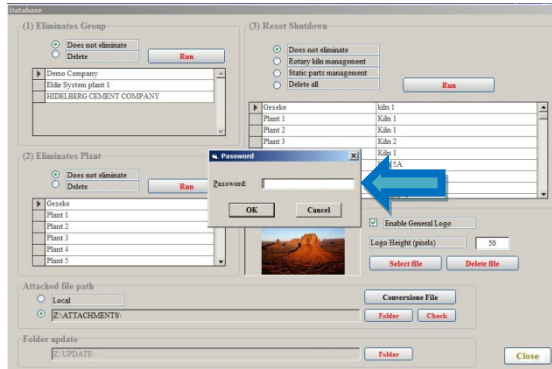
6) Select "Data management"



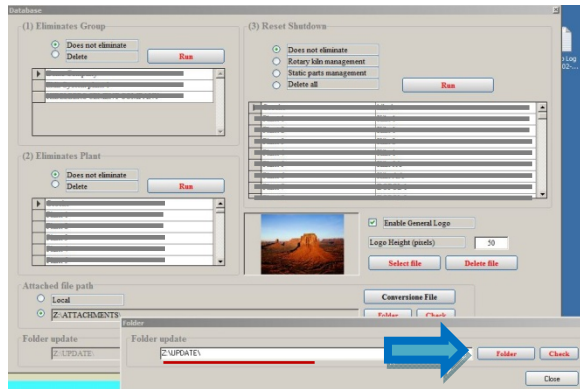
7) Select "Folder"



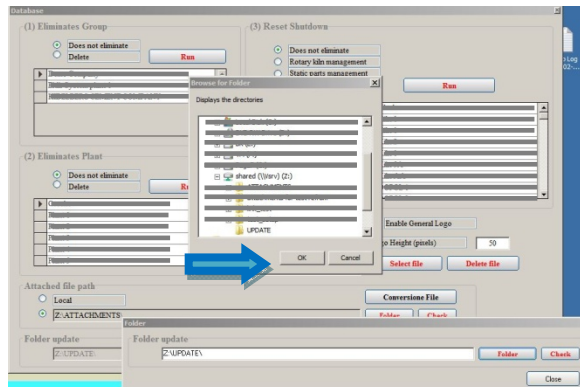
8) Insert correct code to unlock setting (COD) (contact support for code)



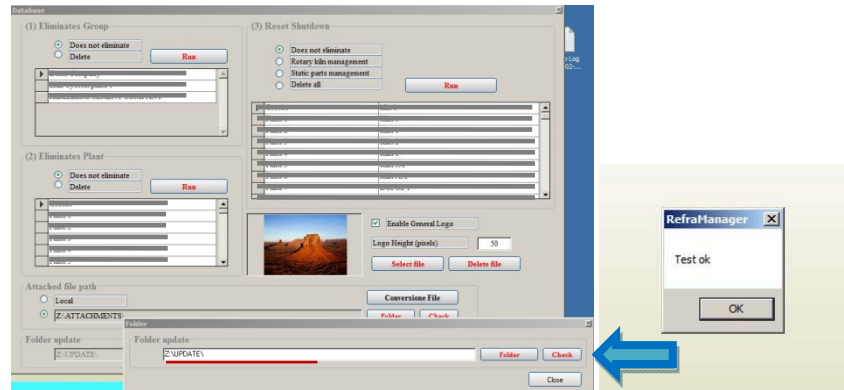
9) Select "Folder"



10) Search and Select Update Folder (contact support to set the update folder group)
-It's advisable to use mapped disk



11) Test access to the folder (Click “Check” –Click “ok”)



- 12) Close the management
- 13) Start using the Program

For more information about parameters of connection string and shared folder

Contact

info@reframanager.com