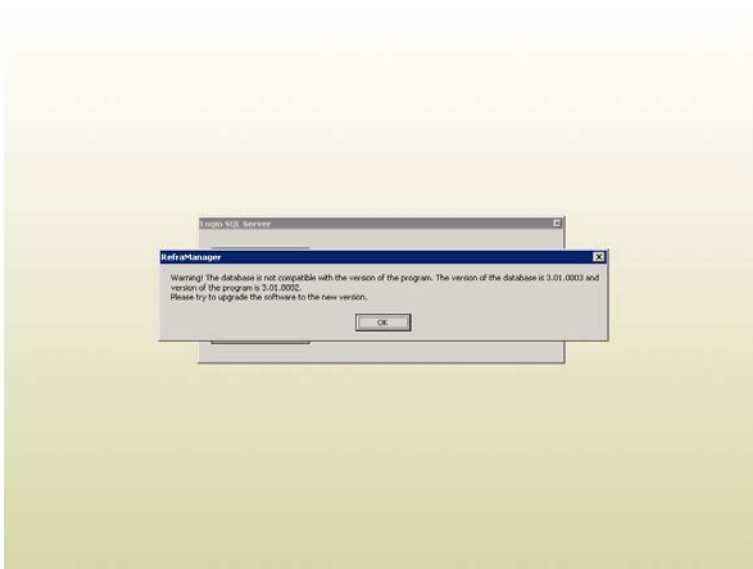


REFRAMANAGER UPDATE

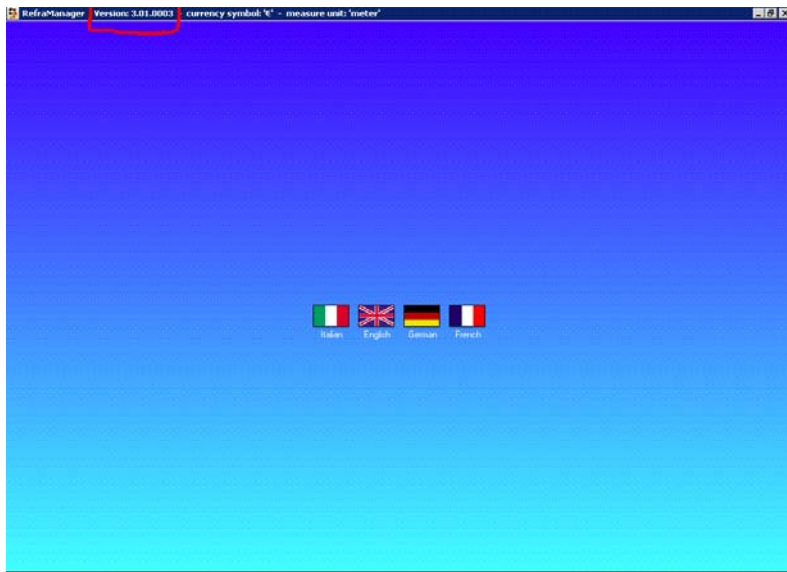
- Open the software-REFRAMANAGER
- type name and password
- If the program needs to be updated, click OK



- To continue the update click Update



- If access to the network folder is correct, automatically start update
- Once the update has finished the software will automatically close and reopen
- At this point re-enter name and password
- Check the actual update indicated at top left (see the next page)



Update completed successfully

for any operation updating problems contact:

info@reframanager.com



Via Francesco Petrarca ,85
10078 Venaria Reale (To) ITALY
Tel. / Fax : 0039 011 4509193
P.I / C.F. : 07577290013
Mail : info@eldirsystem.it